



The Intelligent Choice — In today's economy, businesses face the impossible. Companies must adapt and create processes that allow them to respond immediately to ever changing requirements and the dynamics of the overall business climate itself.

eChange Solutions is a collaborative design change and document management software application that provides secure, scalable, and affordable document control, revision history, and workflow across a global supply chain. eChange delivers effective design change management by providing secure anywhere-access to design information, automated best practice change processes, seamless integration with CAD and desktop systems. eChange is your answer to collaborative document management solutions across your entire enterprise—Truly a global solution.

EXPERIENCE THE eCHANGE DIFFERENCE

With eChange Solutions, you can:

- Provide data control,
- Reduce your engineering change time,
- Increase data available to all users,
- Reduce your time to market,
- Reduce development cycles,
- Improve development productivity, and
- Reduce your overall engineering costs.

In addition, eChange Solutions enables you to maintain the revision life cycle of design documents and related drawings. It allows your engineers to collaborate on the same project and easily communicate engineering data and changes to the rest of the organization.

**Make Your Choice Count
by contacting
Empresa Solutions today at
1-480-785-8334
OR
sales@empresasolutions.com.**

Over 200 Companies Worldwide Can't Be Wrong. Experience the eChange Difference In Your Business!

Installed in over 200 companies worldwide, eChange gives you the ability to win in today's marketplace.

ENTERPRISE, INDUSTRIAL-STRENGTH ARCHITECTURE

No limitations to scalability with this out-of-the-box application. There are no maximum document and user levels as some competitors openly publicize.

OPEN SYSTEMS FRAMEWORK

Enterprise database and product architecture that provides an open systems framework. This secures the most important asset that you have—your corporate and product intellectual property (IP).

SECURE & STABLE BACKEND ENVIRONMENT

MS SQL is already built into the product. There is no need to purchase a 3rd party database.

SCALES TO ACCOMMODATE GROWTH

eChange satisfies all of your document management needs as they develop and as your amount of data increases within your business.

DESIGNED FOR USE OVER THE INTERNET

It easily extends to all entities within a global enterprise or global supplier base.

DOES NOT REQUIRE SIGNIFICANT ORGANIZATIONAL CHANGE

No new skills and no new personnel are necessary to make eChange work in your environment. In addition, eChange conforms to the common look and feel of other Windows applications so users feel right at home.

POST-SALES PRODUCT SUPPORT

No other vendor provides a global call center, providing all levels of technical support when you need it most. When you have eChange, Empresa is there for you.

Analyze your Current Document Management Needs and Capabilities—

Do you have an efficient method for searching for documents?

Is the document you are using the latest revision?

Can your field people access drawings remotely?

Are your documents and CAD drawings stored in one place & accessible by all authorized users?

Do you have an effective routing & workflow process to manage change?

There is a single comprehensive solution that addresses all of these challenges and more . . .

eChange Solutions Features

Automatic revision control

SQL database enabling storage in excess of 500,000 documents

Connectivity with Multiple CAD Platforms

Fully enhanced workflow and automated routing process

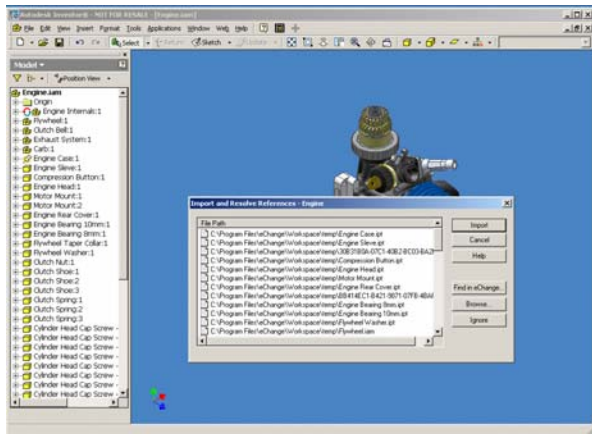
THE eCHANGE ADVANTAGE

eChange solutions empowers you to take control of your information. It can help you transform your business to achieve the highest level of efficiency in your organization by enabling you to:

- Manage the complete life cycle of document-based information
- Incorporate workflow and process management to automate business processes
- Capture design and design-related data inside CAD applications to create, revise, review and release drawings
- Acquire a developer's toolkit to create applications that integrate with eChange for further value

CAD CONNECTIVITY

eChange Solutions is ideal for desktop and workgroup level applications, and is scalable for departmental and enterprise uses. Autodesk Inventor is included in the suite of Autodesk CAD applications supported by the Empresa offering. eChange Solutions is fully compliant with the latest AutoCAD Suites, Inventor, and SolidWorks.



eChange is compatible with Autodesk Inventor enabling effective 3D document management

About Empresa Solutions, Inc.

Empresa Solutions is the leading developer of enterprise software solutions that improve efficiency and workflow processes in enterprises worldwide. Empresa's suite of products provides advanced document and data management solutions that transform and extend relationships between customers, suppliers and products. For more information, visit the Empresa Solutions web site at www.empresasolutions.com or call 1.480.785.8334.

DOCUMENT MANAGEMENT IN 3D ENVIRONMENTS

As a result of companies moving to 3D CAD environments, there is an emerging demand for collaborative document management capabilities. eChange quickly, affordably and seamlessly integrates to the Autodesk Inventor product, to create an enhanced 3D CAD environment, supporting the mission-critical demand for document management in effective 3D design.

The true 3D modeling features of Inventor will result in the ability to increase the complexity of designs, creating an increased demand for the robust document management system that eChange Solutions offers.

EMPRESA TECHNICAL ASSISTANCE

eChange customers have access to a comprehensive maintenance and support offering. The Empresa Technical Assistance (ETA), a professional, three-tiered technical organization, provides an all-inclusive maintenance and support program for eChange Solutions customers. The team of highly skilled engineers supports customers with complete assistance, answering questions and solving complex issues to ensure customer satisfaction.



The call center is in operation during the core business hours of all of our global customers. There is no intermediary required. There is no delay in initial response to problems. The technical support is readily accessible via phone, email, or the web.

WHAT CUSTOMERS ARE SAYING ABOUT eCHANGE SOLUTIONS

"eCHANGE SOLUTIONS WAS THE EASIEST AND MOST COMPLETE ELECTRONIC DOCUMENT MANAGEMENT SYSTEM FOR ALLEGHENY TO USE."

-MICHAEL GOGOL,
GENERAL MANAGER,
ALLEGHENY POWER

"THE BEST BENEFIT OF USING eCHANGE IS THE ABILITY TO EASILY SHARE DATA AND TRACK REVISIONS. IT'S BEING WELL-RECEIVED WITHIN THE ORGANIZATION."

-MERLE CONN,
PROJECT MANAGER OF IT
PRODUCTS, CITY OF
EDMONTON

"eCHANGE SOLUTIONS REPRESENTS THE NEXT GENERATION OF SECURE DRAWING MANAGEMENT SYSTEMS . . . AND ONE OF SEVERAL IMPORTANT INITIATIVES THAT WE HAVE NOW COMPLETED."

-WILLIAM LEMANSKI,
MGR OF SOFTWARE
APPLICATIONS, ENERGY
NUCLEAR NORTHEAST

"eCHANGE SOLUTIONS PROVIDED US WITH THE ABILITY TO STORE ALL OUR DOCUMENTS IN ONE ORGANIZED SECURE LOCATION. WE CAN NOW FIND THE LATEST DRAWINGS REVISIONS IN A MATTER OF SECONDS."

-BUCK LORTS,
CAD MANAGER, TRI-MET